

## LEADER OF PRECAST CONCRETE INDUSTRIES

### TECHNICAL FEATURES OF THE BEST QUALITY PRODUCTS



#### Bright Colors:

Gondal UPVC roofing sheets are protected by ASA resin. After installation, the color will be retained for more than 8 years.



#### Non Corrosive:

Completely non corrosive, specially suitable for coastal areas, animal confinement buildings and heavy chemical posed area.



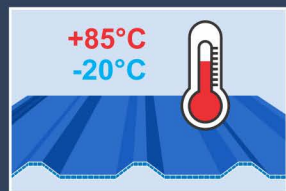
#### Acoustic Insulation:

The physical properties have excellent noise insulation, Resist to noise up to 15dB.



#### Electric Insulation:

Gondal UPVC roofing sheets & wall cladding are non-conductive against electricity & lightening.



#### Temperature Resistant:

Built-in heat insulator. Reflects up to 71% of heat energy and has a wide operational range of -20 C to +85 C.



#### Load Carrying:

Testing shows that with suggested purlin distance, there is no breakage under 250-Kg load.



#### Fire Resistant:

UPVC roofing sheets & wall cladding are categorized as self extinguishing class "B1" material.

### STANDARD COLORS



## UPVC ROOFING SHEETS AND WALL CLADDINGS



Director:  
Zeeshan Afzal Gondal  
B.Sc Civil Engg. (Canada)  
0300-8525555



Director:  
Umair Afzal Gondal  
B.Sc Civil Engg. (Canada)  
0302-4000070



Director:  
Zubair Afzal Gondal  
B.Sc Civil Engg. (Canada)  
0300-4000076



Chairman: Al-Haaj Muhammad Afzal Gondal  
0092-300-4000070

#### HEAD OFFICE GUJRAT

By-Pass Road Dheerkey Gujrat  
E-mail: gondalgroup@hotmail.com  
E-mail: gondalgroupgujrat@yahoo.com

#### SALES DEPARTMENT

Girder & Slab: 0300-4999469-75  
UPVC Sheets: 0300-4999476-80  
Double "TT" Planks: 0300-8620001-02

#### ZONAL OFFICE LAHORE

Ahad Tower Kalma Chowk  
Phone: 042-35884030  
Cell: 0300-8620004, 0300-8620006

#### SALES OFFICE FAISALABAD

Sheikhpura Road Haji Abad  
Phone: 041-8847771  
Cell: 0300-4999467-68  
0302-4999468-69

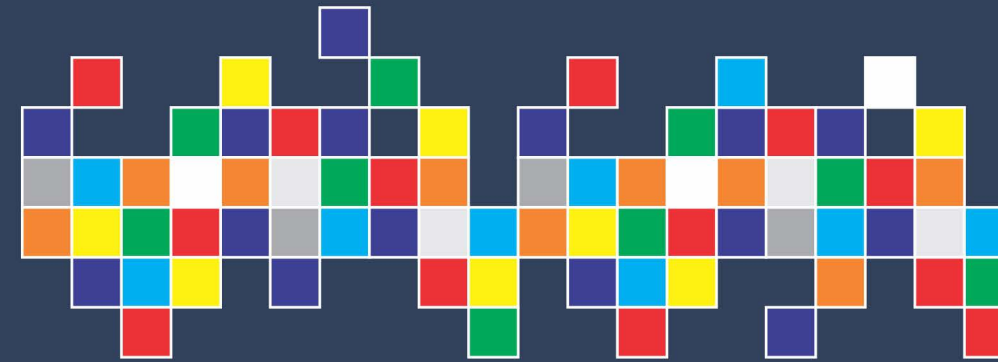
#### SALES OFFICE ISLAMABAD

0300-8620001-02

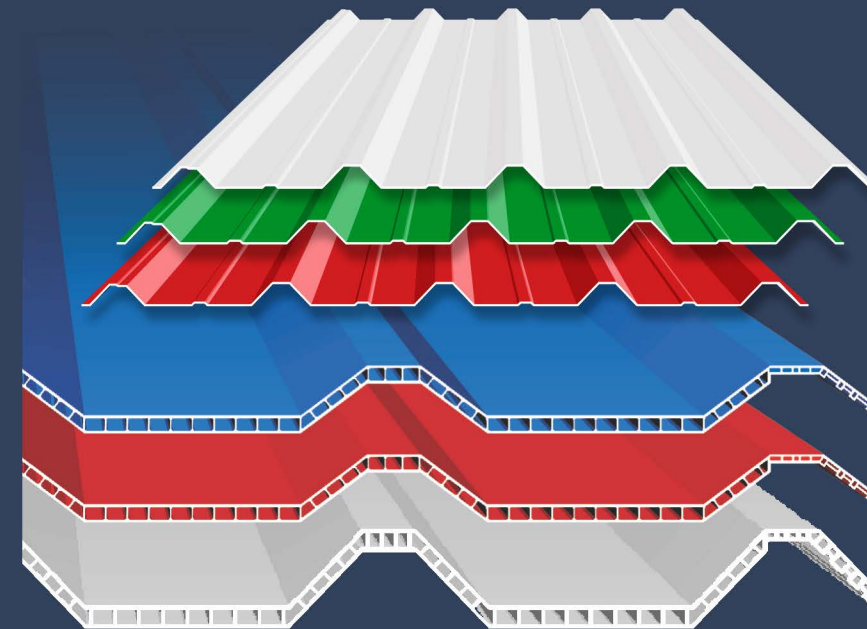


## UPVC ROOFING SHEETS AND WALL CLADDINGS

HIGHEST QUALITY, COMPETITIVE PRICES  
EXCELLENT BEFORE, ON AND AFTER SALES SERVICES



**GONDAL**  
**GROUP OF INDUSTRIES**  
PEB Structures, UPVC Profiles &  
Precast / Prestressed Concrete



Equipped with the 21st century system,  
We are the industry leaders of Precast & Pre-stressed  
concrete manufacturer of Pre-engineered Steel Building & K-  
Span Steel Buildings. Pioneer of UPVC Plain Sheet, Single  
Skin & Twin Wall Corrugated Sheets.

## MANUFACTURER OF PRE-ENGINEERED BUILDINGS

### APPLICATIONS AND COMPARISON

#### COMPULSORY APPLICATIONS:

- |                         |                       |                   |
|-------------------------|-----------------------|-------------------|
| 01- Dairy & Goat Farm   | 10- Mining            | 19- Vehicle Shed  |
| 02- Poultry Farm        | 11- Porcelain         | 20- Cultivation   |
| 03- Educational Project | 12- Electroplating    | 21- Residential   |
| 04- Pharmaceutical      | 13- Chlor-Alkali      | 22- Industrial    |
| 05- Food Processing     | 14- Chemical          | 23- Commercial    |
| 06- Green House         | 15- Refining Unit     | 24- Agricultural  |
| 07- Fertilizer          | 16- Printing & Dyeing | 25- Textile       |
| 08- Leather Processing  | 17- Papermaking       | 26- Marriage Hall |
| 09- Coastal Area        | 18- Foundry           | 27- Warehouse     |

Material Feature	Galvanized Iron	Asbestos	Fiberglass	UPVC
Climate Resistance	Rust	Decay	50%	Excellent
Environment Protection	In unity with usage standard	Proven Health hazard	Can cause skin irritation	Friendly
Green Product	NO	NO	NO	Green Product
Recycling	Not Proper	NO	NO	Recyclable
Chemical Resistant	NO	NO	Poor	Excellent
Fire Resistant	NO	NO	Poor	Extinguishing
Heat Transmission	About 85%	About 70%	About 52%	About 29%
Resistant to impact	Resistant to impact	Brittle	Low impact resistance	Flexible
Thermal Effects	Expand at extreme temp.	Cracks in extreme cond.	Poor Resistant	Efficient
Sound Insulation	Very Poor	Little bit Insulated	Little bit Insulated	Insulator
Dewdrops	Easily Condense	Condense	Easily Condense	No Dewdrops

Steel	Asbestos	Fiberglass	PVC
X	X	X	✓
> Not Approved > Short Life > No Recycling	> Not Approved > Health Risk > No Recycling	> Not Approved > Expensive > No Recycling	> Approved > Economical > Long Life



www.gondalgroup.com



www.gondalgroup.com

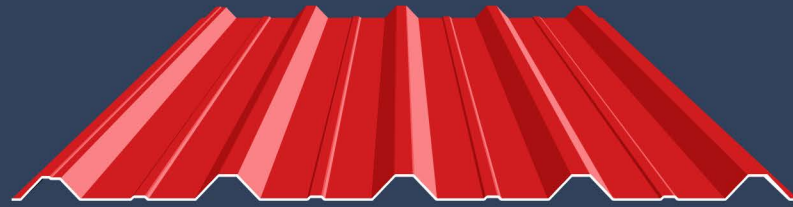


www.gondalgroup.com



## UPVC ROOFING SHEETS AND WALL CLADDINGS

### S-TYPE UPVC SINGLE WALL CORRUGATED SHEETS



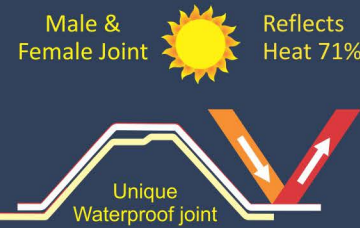
**S**ingle Wall / Skin is a new generation product and most popular throughout global markets due to the wide range of features and specifications.

#### Advantages:

1. Cost effective & maintenance free.
2. Abrasion resistant and variety of color options.
3. Light weight & an alternate to conventional metal roofing system.
4. Good mechanical strength & impact resistant.
5. Can be cut, shaped, welded and jointed.
6. Environment friendly & easy to install.
7. Rustproof & very suitable for tropical weather and coastal areas.

#### Technical Specifications:

- |                   |                                  |
|-------------------|----------------------------------|
| Width (Effective) | 1000mm                           |
| Sectional Height  | 34mm                             |
| Standard Length   | 5.8m & 11.8m                     |
| Custom Length     | Any Size                         |
| Thickness         | 2 to 3mm                         |
| Purlin Distance   | 0.914m                           |
| Weight            | ±5.4 Kg/m <sup>2</sup>           |
| Basic Material    | UPVC with UV Protection Embedded |
| Standard Colors   | Blue, White, Gray, Green & Red   |
| Types             | Opaque & Semi Transparent Sheets |
| Coating           | ASA with 8 years Warranty        |



#### PVC PLAIN SHEET

##### APPLICATIONS:

Table Top  
Pouch  
Doors Strip  
Book Cover  
Cosmetics bag  
Billboards  
Stickers  
Inner Lining  
3D Advertising  
Shower Curtain  
Advertisement Sign



#### PVC PANTILE ROOFING SHEET

COMING SOON



## UPVC ROOFING SHEETS AND WALL CLADDINGS

### LOW RIDGE UPVC TWIN WALL CORRUGATED SHEETS



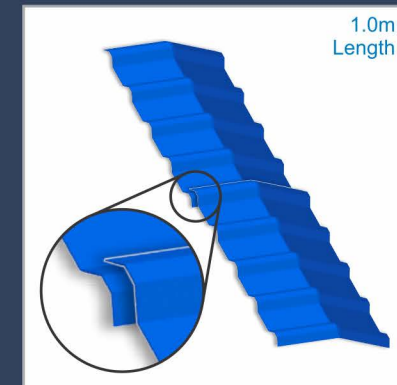
**T**win Wall Corrugated PVC Roof Sheet is a superior product for residential, industrial, commercial, agricultural and schooling projects. Exceptionally weather resistant coated with ASA.

#### Advantages:

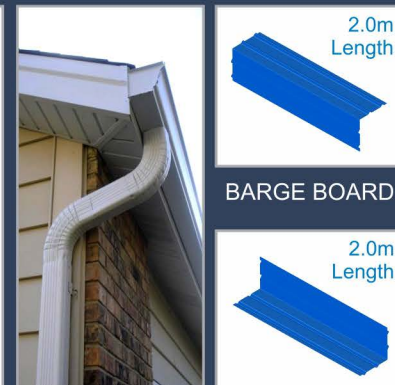
1. Built-in heat insulator. Doesn't need any additional insulation.
2. Reflects heat energy up to 90%.
3. Built-in sound insulator i.e. not noisy when raining (unlike metal roofing). Reduces noise up to 15dB.
4. Unique Male/ Female inter bearing joint prevents leakage.
5. Translucent panels help save electricity by letting in day light.

#### Technical Specifications:

- |                   |                                  |
|-------------------|----------------------------------|
| Width (Effective) | 1000mm                           |
| Standard Length   | 5.8m & 11.8m                     |
| Sectional Height  | 42mm                             |
| Thickness         | 11.10mm                          |
| Purlin Distance   | 1.2m                             |
| Weight            | ± 5.4Kg/m <sup>2</sup>           |
| Basic Material    | UPVC with UV Protection Embedded |
| Standard Colors   | Blue, White, Gray, Green & Red   |
| Types             | Opaque & Semi Transparent Sheets |
| Coating           | ASA with 8 year warranty         |



TOP RIDGE



DOWN SPOUT



SIDE FLASHING



Rubber Ring

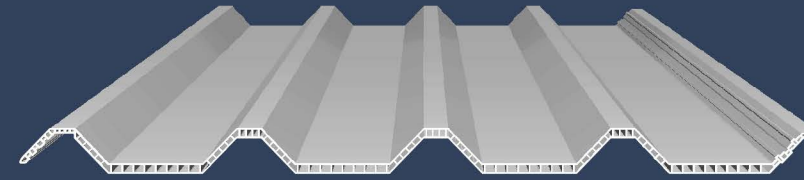
Screw Cap

Self Drilling Screw  
Washer

Screw Cap

## EQUIPPED WITH THE SYSTEMS OF 21ST CENTURY

### HIGH RIDGE UPVC TWIN WALL CORRUGATED SHEETS



**H**igh ridge twin wall/ hallow corrugated sheet is also a built-in structure & the best heat insulator to meet special designs.

#### Advantages:

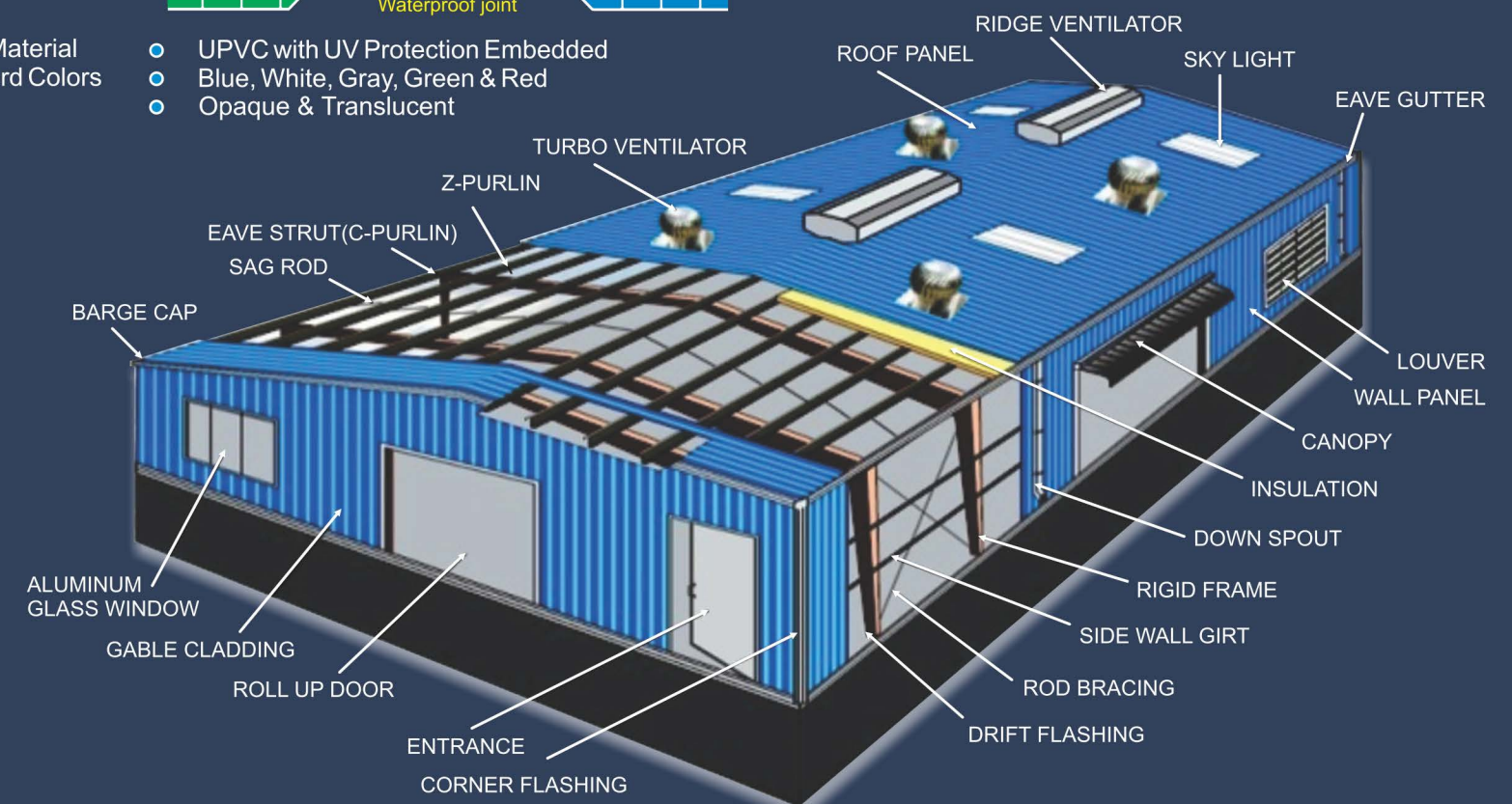
1. Specially designed for pre-engineered buildings with purlin spacing of 1.5m (5 feet).
2. Cost effective solution for sheet replacement projects as no modification are required to existing structures.
3. High ridge profile (60mm) provides a deeper valley to carry more rain water to avoid leakage in winder span.
4. It provides extra load bearing capacity on long span.

#### Technical Specifications:

- |                   |                        |
|-------------------|------------------------|
| Width (Effective) | 1000mm                 |
| Standard Length   | 5.8m & 11.8m           |
| Sectional Height  | 60mm                   |
| Thickness         | 12.7mm                 |
| Purlin Distance   | 1.5m                   |
| Weight            | ± 6.0Kg/m <sup>2</sup> |



- |                 |                                  |
|-----------------|----------------------------------|
| Basic Material  | UPVC with UV Protection Embedded |
| Standard Colors | Blue, White, Gray, Green & Red   |
| Types           | Opaque & Translucent             |



BARGE CAP

ALUMINUM GLASS WINDOW

EAVE STRUT(C-PURLIN)

SAG ROD

Z-PURLIN

TURBO VENTILATOR

ROOF PANEL

RIDGE VENTILATOR

SKY LIGHT

EAVE GUTTER

LOUVER WALL PANEL

CANOPY

INSULATION

DOWN SPOUT

RIGID FRAME

SIDE WALL GIRT

ROD BRACING

DRIFT FLASHING

ENTRANCE CORNER FLASHING

ROLL UP DOOR

## PIONEER OF UPVC CORRUGATED SHEETS FOR PEB

### UN-PLASTICISED POLYVINYL CHLORIDE PLAIN SHEET



**P**lain Sheets with a smooth surface, easy-to-clean, anti-bacterial, water resistant barrier and durable surface makes it an excellent wall and ceiling product. It's surface is dirt-resistant and easy to clean with most non-abrasive cleaning products. It is light and simple to handle, cut and install.

#### Advantages:

Quick and easy to clean, light weight, can be printed with decorative effects, low maintenance costs, good resistance to scratches or dents and Quicker than tile work.

#### Applications:

Sign board, Air-conditioning Duct, Door, Partition Wall, Wing Corner Guard, Top Ridge, Gable Trim, Flooring, Fluid Applied Flashing, Making all types of PEB auxiliary and liner for hospitals.

#### Technical Specifications:

- |                   |   |
|-------------------|---|
| Thickness         | 2mm to 3mm                              |
| Width (Effective) | 1220mm                                  |
| Standard Length   | Any Length as well as available in Roll |
| Weight            | ±0.380Kg/m <sup>2</sup>                 |
| Standard Colors   | White                                   |



www.gondalgroup.com



www.gondalgroup.com



www.gondalgroup.com



www.gondalgroup.com